

# Spark

A quarterly publication for members of Champion Credit Union, Inc.

March 2022

## CCU Rate Snapshot

### LOANS

#### ANNUAL PERCENTAGE RATE (APR)

#### **New and Used Vehicles /Motorcycles**

72 months or less **as low as 2.20%\***  
73 to 84 months **as low as 2.70%\***

#### **Home Equity Lines of Credit**

Two types available!

Variable Rate\* Prime Rate + 0

#### **1st Mortgages** Call for Current Rates!

#### **Recreational Vehicles/Boats**

120 months or less **as low as 4.39%\***  
121 to 180 months **as low as 5.39%\***

#### **Personal Loans**

Variable Terms **as low as 7.74%\***

#### **Visa Credit Card**

Fixed Rate & NO Annual Fee! 14.99%

### DEPOSIT ACCOUNTS

#### ANNUAL PERCENTAGE YIELD (APY)

#### **Share Savings Accounts** 0.05%\*\*

Low minimum balance to earn APY

#### **Club (Savings) Accounts** 0.05%\*\*

Save for whatever your needs may be

#### **Young Savers Club** 0.05%\*\*

For our younger members

#### **Share Draft Checking** 0.01%\*\*

Free checks & NO monthly fee!

#### **Money Management**

**Yields as high as 0.20%\*\***

More yield & more flexibility

Rates are effective 4/01/2022 and are subject to change. \*Actual rate and term are based on individual members credit worthiness, age of collateral offered, amount financed, other conditions or restrictions may apply. \*\*Conditions or restrictions may apply to all deposit accounts. Contact the Credit Union for details

## CCU WANTS TO TURN YOUR DREAMS INTO A REALITY... ON THE HOUSE!



Making your dreams a reality is easy with a CCU Home Equity Line of Credit. Take advantage of the equity in your home to make home improvements, consolidate high interest rate bills, purchase a new vehicle, pay for education, or finally take that dream vacation. Whatever your dreams... let your home work for you. Just call or visit any credit union location to begin the process.

CCU Home Equity Lines of Credit have a very low interest rate of prime plus 0%. That means the interest rate right now is a low 3.50% APR\*! To make it even better, the credit union does not impose annual fees, like some other lenders do. A home equity line of credit from your credit union may even save you money on your federal income taxes. Finance charges paid on home equity lines of credit may be tax deductible\*.

### Apply for a CCU Home Equity Line of Credit May 1, 2022 - July 31, 2022 and the closing costs\* are on us!

Get your CCU Home Equity Line of Credit now and take advantage of low rates, no closing costs\* and great Champion Credit Union service!

\*APR=Annual Percentage Rate. Home Equity Line of Credit rates are variable and based on the prime rate published in the Wall Street Journal. Champion Credit Union will pay up to \$800.00 in closing costs on Home Equity Lines of Credit. A minimum advance of \$10,000.00 must be done within six (6) months of closing date to qualify for no closing cost promotion. Maximum combined loan to value can not exceed 80%. Consult with your tax advisor for your specific tax deductibility options. Credit approval applies to all loans.

## Champion Credit Union Mission Statement

Champion Credit Union, Inc. is a member-owned financial cooperative whose mission is to be progressive in providing the best in a full range of services to our members while maintaining financial stability.

# CCU's 80th Annual Meeting Was Fun For All!

Champion Credit Union held its 80th Annual Meeting on Saturday, April 2, 2022 at the Graystone Banquet Hall in Perrysburg. Members enjoyed dinner, the CCU business meeting, prizes and live entertainment featuring Wally & the Beavs!

At the business meeting, three positions on the Board of Directors, as well as one position on the Credit Committee were filled. Congratulations to the following individuals who will serve in the interest of CCU members:

## Board of Directors

Terry Benton, Chairman  
David Bobak, Vice Chairman  
Judy Buck, Secretary  
Steven M. Grindle, Treasurer  
Sheryl Birch  
John Eisenhauer  
Jill Siebert  
Rosalie Sneider  
Akram Youssef

## Supervisory Audit Committee

Judy Spade, Chairman  
Sally Blevins  
Dee Glover  
Mark Mayfield

## Credit Committee

Benny Rutherford, Chairman  
David Beisel  
John Cherry

## Additional Member Benefits at No Cost!

Through a partnership with American Income Life Insurance Company, additional benefits are being provided to all members of Champion Credit Union.

### BENEFITS INCLUDE

- A Group Accidental Death & Dismemberment Benefit
  - Health Services Discount Card
  - Child Safe Kit

Learn more at [www.aillife.com/benefits/sgjxv](http://www.aillife.com/benefits/sgjxv)



[www.aillife.com](http://www.aillife.com)

Protecting Working Families

**Krissa Hensley**

Public Relations  
419.344.4832

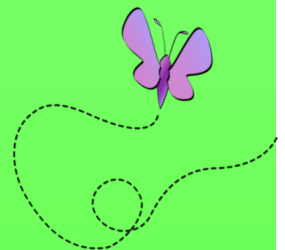
**AMERICAN INCOME LIFE**  
Insurance Company

An AIL representative will contact members who return the reply card to arrange a convenient time to deliver their benefits and review other supplemental insurance benefits that may be available.

## Credit Union Fee Schedule\* (may apply to all accounts)

Par value of one share	\$5.00
Overdraft transfer	\$5.00 per item
Return check/NSF	\$30.00 per item
ODP	\$30.00 per item
Return deposit item	\$15.00 per item
Stop payment	\$30.00 per request
Official Check, Cashiers Check, Money Order Stop Payment/Replacement	\$30.00 per item
Share draft printing	Cost varies by style
Share draft copy	\$3.00 per item (free online with virtual branch)
ATM/Debit card reissue/reactivation	\$25.00
ATM/Debit card replacement	\$15.00
Expedited MasterMoney card	Prices vary by delivery method
MasterMoney transaction copy	\$4.00 per copy
ATM Empty Envelope Deposit	\$20.00
ATM withdrawal	\$1.00/withdrawal (after the 10th withdrawal)
Medalion Signature Guarantee	No Charge (members only)
Official Check	\$1.00/Check after one (1) free/day
Money order	\$1.00 per item
Cashiers check	\$3.00 per item
Domestic wire transfer (outgoing)	\$20.00 per transfer
International outgoing wire transfer	\$45.00 per transfer
Wire transfer (incoming)	No Charge
ACH/EFT NSF	\$30.00 per item
ACH/EFT stop payment	\$30.00 per item
Account history	\$.50 per inquiry
Account history printout	\$1.00 per printout
Account reconciliation	\$10.00 per hour
Statement copy	\$1.00 per copy
Return mail	\$5.00 per occurrence
Invalid address	\$5.00/month
Child Support Enforcement	\$5.00/Each Presentation
Non Member Check Cashing	\$5.00 (Cashing a CCU check)
Member Check Cashing	\$5.00 To avoid the check cashing fee, a member must have \$300.00 in total deposit balances or an active CCU Share Draft Account or be under age 21
Inactive account	\$25.00 per year, after 2 years of inactivity and account balance of less than \$100.00
Excessive withdrawals <i>(Share draft accounts excluded from excessive withdrawal fee)</i>	\$5.00/withdrawal, after 6 preauthorized, automatic, or telephone transfers during any month.
Minimum balance	\$5.00 if the share balance falls below the \$5.00 minimum par value requirement to maintain membership on the last day of month
Garnishment/Levy	\$25.00/Per Garnishment/Levy
Gift Card	\$2.00/Per card for members \$4.00/Per card for non-members
Money Management Service Fee	\$20.00/month if minimum balance is not met
Money Management	\$20.00 if account is closed within ninety (90) days of account opening
Early Closure Fee	\$10.00/Withdrawal, after 6 preauthorized, automatic, or telephone transfers to another account or to a third party in any month, and no more than three (3) of these six (6) transfers may be made by check, draft, or debit card.
Money Management	
Excessive Withdrawal	
Reloadable Prepaid Card	\$5.00/ Card
Virtual Branch paper statement	\$2.00/Statement for paper statement. No charge/Statement for an e-statement
Bill Payment Monthly Fee	No Charge
Close Account	\$5.00 (If closed within six(6) months of opening)
Account Reopen	\$5.00 (If Reopened within six (6) months of closing)
Lock Boxes size	Varies by box
Lock Box Lost Key	at cost
Lock Box Locksmith/Drill	at cost
Lock Box Late Payment	\$5.00

\*Fees are subject to change



# CCU Calendar



## Monday, April 18, 2022

IRS Tax Deadline. Visit the Tax Solutions link on the CCU home page at [www.ChampionCU.org](http://www.ChampionCU.org) for a special offer and file your taxes before the deadline!

## Friday, April 29, 2022

The Ohio Credit Union Foundation video scholarship applications are due. Contact a CCU office, see the below or visit the Youth tab at [ChampionCU.org](http://ChampionCU.org) for more details.

## Saturday, May 7, 2022

Champion Spark Plug Retirees or Workers Reunion Luncheon at UAW Local 12 Hall 2300 Ashland Ave. Doors open at 11:00 a.m. and lunch at 12:00 p.m. RSVP by May 1, 2022 to Dave Sowinski (419) 304-5838 or via email: [dsowins2239@gmail.com](mailto:dsowins2239@gmail.com)

## Monday, May 30, 2022

The Credit Union will be closed in observance of the Memorial Day Holiday



## ANNUAL VIDEO SCHOLARSHIP OPPORTUNITY!



The Ohio Credit Union Foundation is offering Ohio undergraduate credit union members the opportunity to apply for one of three scholarships (\$5,000, \$2,500 & \$1,000) by creating an interactive 1 to 2½-minute video answering the following scholarship question:

### *How Can Credit Unions Attract Younger Members?*

Video entries can be edgy, funny, bold, simple, serious – or anything in between. Entries will be judged on the accuracy of information presented, effectiveness in addressing the scholarship question, and originality.

The Video Scholarship begins on Tuesday, Feb. 1, 2022, and ends Friday, April 29, 2022. All video entries must be submitted via the Foundation's website,

[www.OhioCreditUnionFoundation.org](http://www.OhioCreditUnionFoundation.org)

by Friday, April 29, 2022, at 11:59:59 p.m. EDT. Video finalists selected by a judging panel, will appear on the website and the scholarship winner will be announce on May 25, 2022.

## Eligibility

Applicants must be a member of an Ohio-based credit union who is in good standing and currently attends, or has been accepted to attend an accredited college or university, in pursuit of an undergraduate degree may apply. Proof of acceptance/enrollment will need to be submitted upon request.

**CHAMPION CREDIT UNION, INC.**  
[www.ChampionCU.org](http://www.ChampionCU.org)

**Office Hours (All Locations)**  
Monday—Thursday 9:00 am to 4:30 pm  
Friday 9:00 am to 5:45 pm

**Audio Response**  
24 - Hour Telephone Access: **800-285-2830**

**Virtual Branch / Virtual Loan**  
24 - Hour Online Account Access

**West**  
**4140 West Laskey Road**  
**Toledo, OH 43623**  
**419-407-4140**  
**800-650-5444**  
**Fax: 419-407-8909**

**South**  
1347 South Detroit Avenue  
Toledo, OH 43614

**Sylvania**  
7525 Sylvania Avenue  
Sylvania, OH 43560

**Lost/Stolen MasterCard ATM/Debit Card**  
During normal business hours

**419-407-4140**

After Hours

**800-472-3272**

**Lost/Stolen CCU Platinum Rewards Visa  
Credit Card**

During normal business hours

**419-407-4140**

After Hours

**800-991-4961**

**Lost/Stolen Former TPECU Visa Credit Card**

During normal business hours

**419-407-4140**

After hours

**800-543-5073**

Your savings federally insured to \$250,000

**NCUA**

National Credit Union Administration,  
a U.S. Government Agency

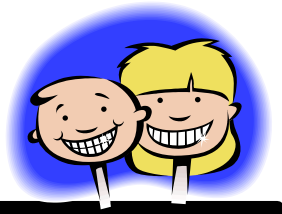


AMERICA'S  
**CREDIT UNIONS™**

*Where people are worth more than money.™*

# Champion Chatter

A special section for Champion Credit Union's young savers



SPRING

